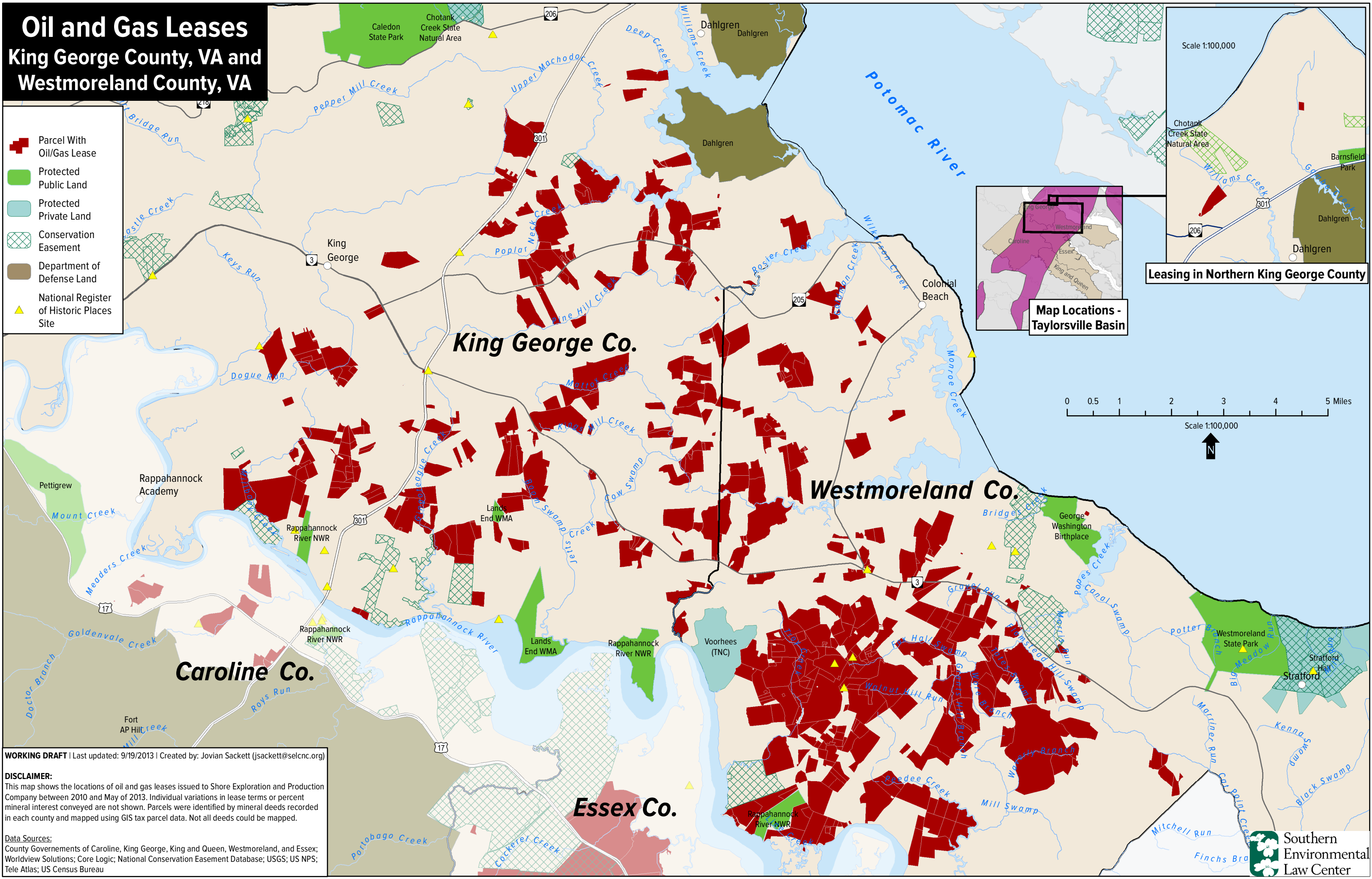


Oil and Gas Leases King George County, VA and Westmoreland County, VA

-  Parcel With Oil/Gas Lease
-  Protected Public Land
-  Protected Private Land
-  Conservation Easement
-  Department of Defense Land
-  National Register of Historic Places Site



Scale 1:100,000

Leasing in Northern King George County

Map Locations - Taylorsville Basin



Scale 1:100,000



WORKING DRAFT | Last updated: 9/19/2013 | Created by: Jovian Sackett (jsackett@selcnc.org)

DISCLAIMER:
This map shows the locations of oil and gas leases issued to Shore Exploration and Production Company between 2010 and May of 2013. Individual variations in lease terms or percent mineral interest conveyed are not shown. Parcels were identified by mineral deeds recorded in each county and mapped using GIS tax parcel data. Not all deeds could be mapped.

Data Sources:
County Governments of Caroline, King George, King and Queen, Westmoreland, and Essex; Worldview Solutions; Core Logic; National Conservation Easement Database; USGS; US NPS; Tele Atlas; US Census Bureau

